

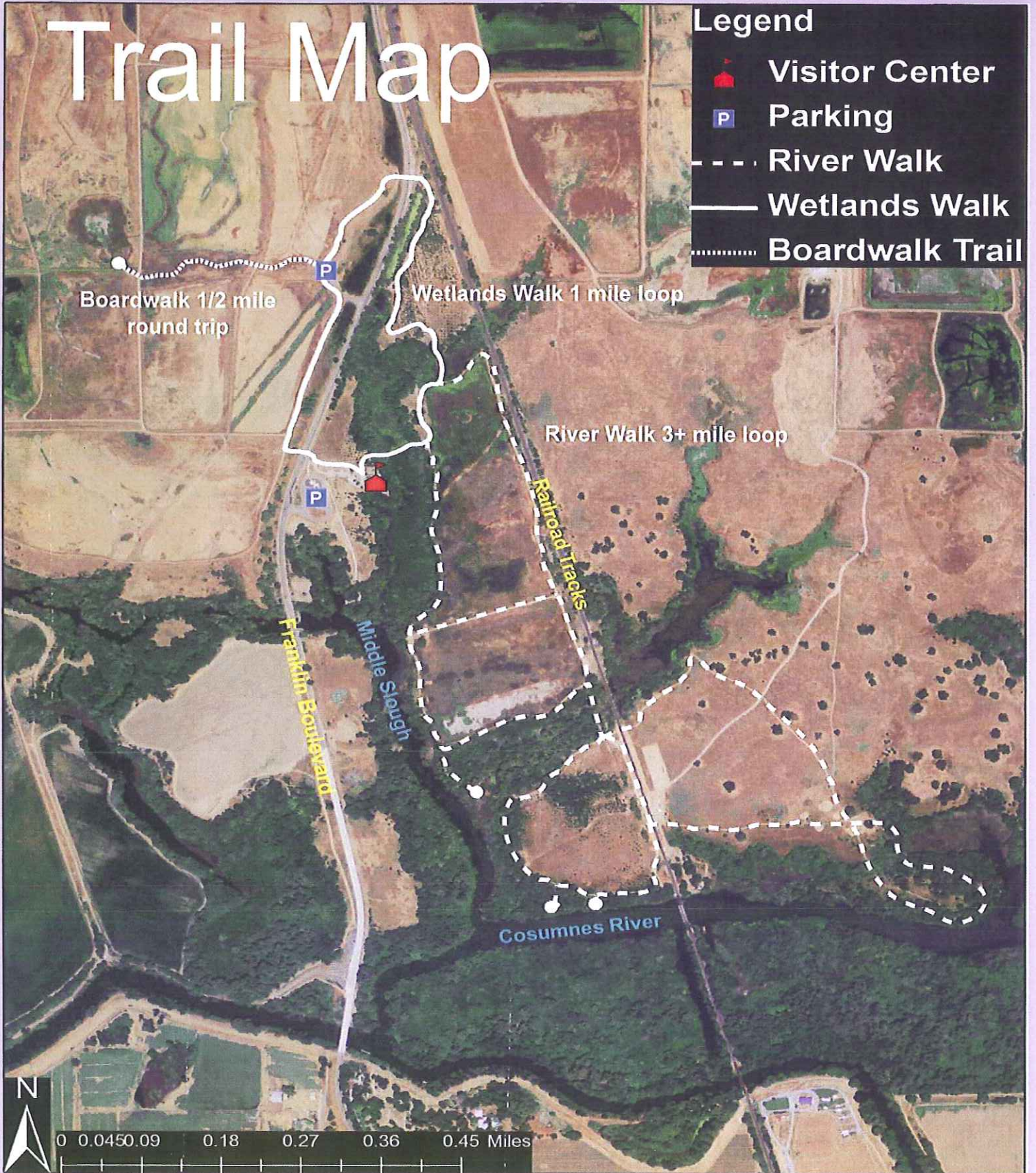


COSUMNES River Preserve

Trail Map

Legend

-  Visitor Center
-  Parking
-  River Walk
-  Wetlands Walk
-  Boardwalk Trail



Welcome to the Cosumnes River Preserve.

Please stay on the trails and obey all signs and rules.



Visitor use at the Preserve is concentrated on two trails and the Visitor Center to limit disturbance to the habitats and wildlife species. Please see the map on the front of this brochure or visit the Visitor Center for more information.

The Cosumnes River Walk and Lost Slough Wetlands Walk are open from sunrise to sunset, year-round. The Visitor Center is staffed by trained volunteer naturalists on weekends, and usually open on weekdays.



Domestic pets and horses are not permitted on the Preserve.

Bicycles are not allowed on the Preserve's trails, but can be locked up at the Visitor Center.



Collecting is not permitted on the Preserve. Please leave rocks, feathers, plants, and animals as you found them.

The Preserve's rule is to pack out everything that you packed in, so please **DO NOT LITTER**.



There are restrooms located in the main parking area and in the boardwalk parking area along the Wetlands Walk.

Hunting, fishing, and camping are not allowed on the Preserve.



Smoking and fires are not allowed on the Preserve.

Poison oak, ticks, mosquitoes, sun, and flooding are all hazards along the trails. Please protect yourself with insect repellent, carry drinking water, and observe all signs.



Guided walks, paddling trips, volunteer workdays, and bird counts are scheduled regularly. Stop by the Visitor Center for more information, call (916) 684-2816, or visit our website at www.cosumnes.org.